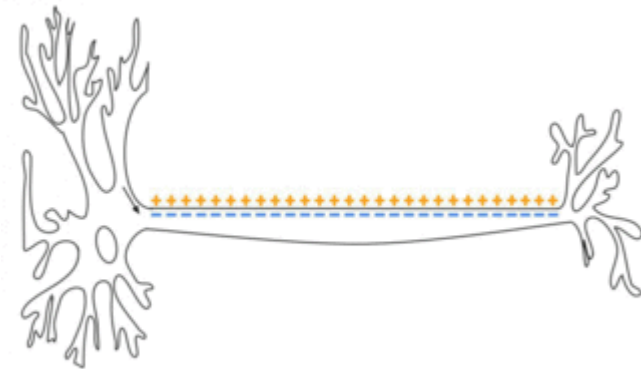


# Action Potential

A rapid rise and subsequent fall in voltage or electrical charge across a cell membrane, primarily in nerve and muscle cells.

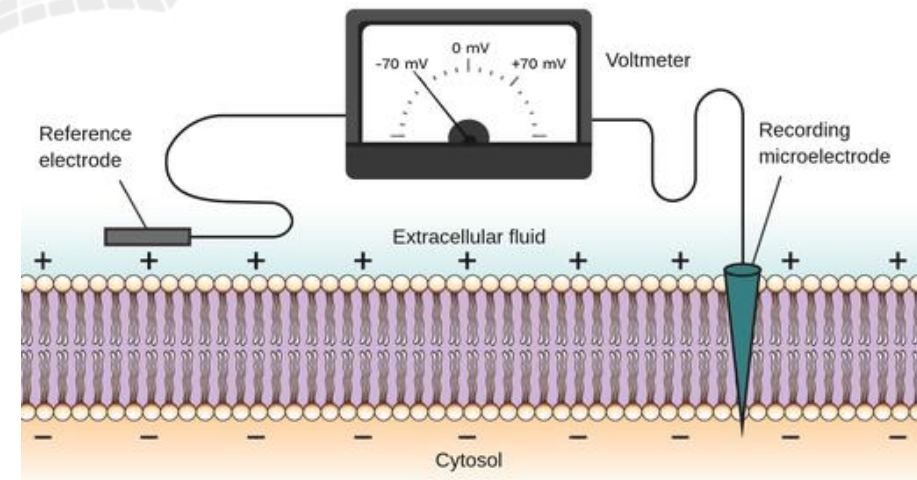
**Example:** The action potential travels along the nerve fiber, allowing the brain to communicate with muscles.



# Membrane Potential

The electrical potential difference across a cell membrane, due to the distribution of ions inside and outside the cell.

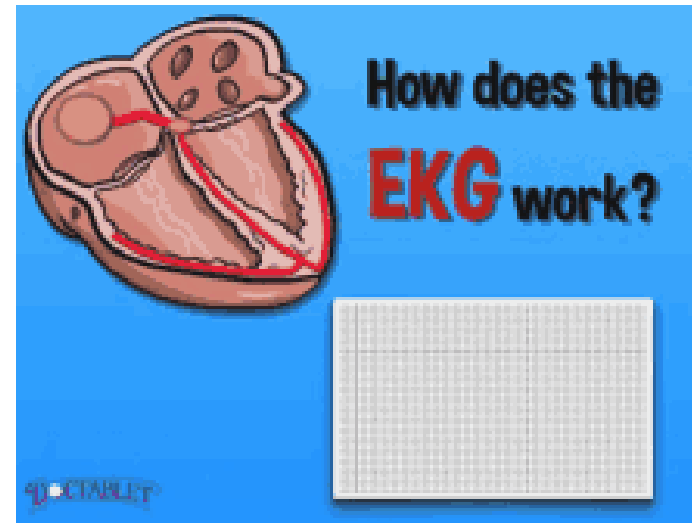
**Example:** The membrane potential is essential for the function of nerve and muscle cells.



# Electrocardiogram (ECG)

A test that records the electrical activity of the heart over a period of time.

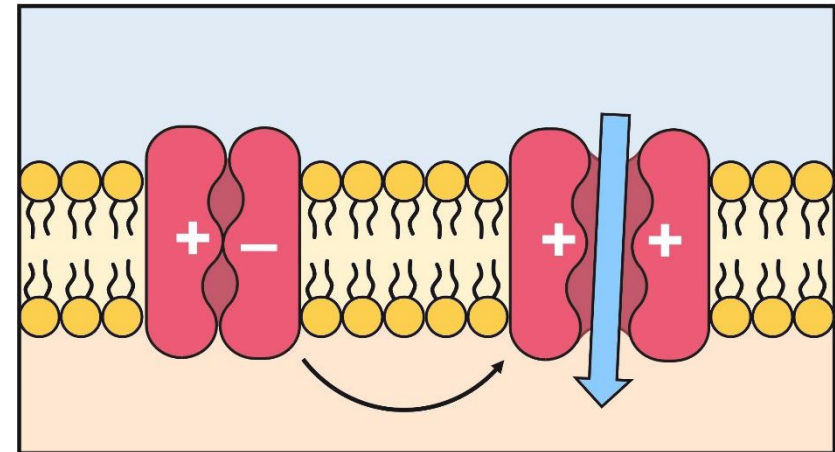
**Example:** The doctor ordered an electrocardiogram to check the patient's heart rhythm.



# Ion Channel

A pore in a cell membrane that allows the selective passage of ions across the membrane.

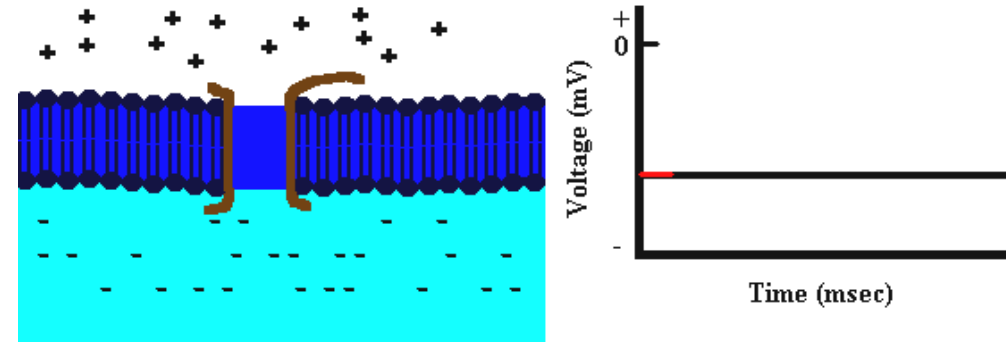
**Example:** Ion channels are crucial for generating and propagating action potentials.



# Depolarization

A decrease in the electrical charge difference across a cell membrane, making the inside of the cell less negative relative to the outside.

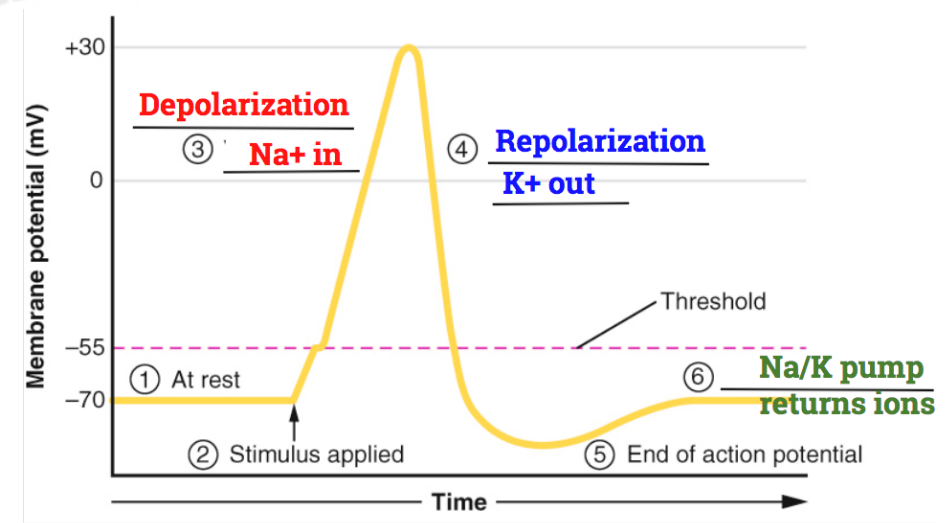
**Example:** During depolarization, sodium ions enter the cell, changing the membrane potential.



# Repolarization

The process of restoring the resting membrane potential after depolarization.

**Example:** Repolarization occurs as potassium ions leave the cell, returning the membrane potential to its resting state.



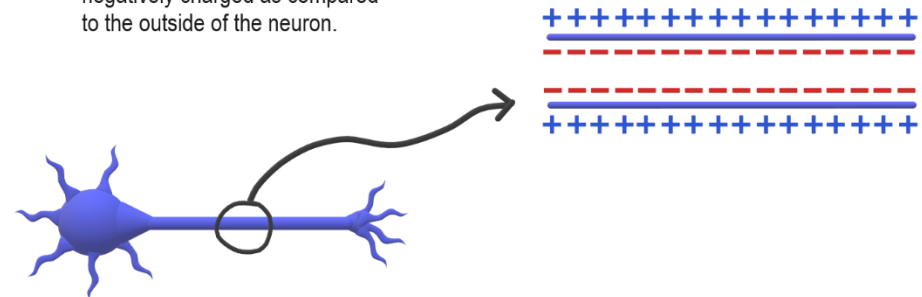
# Resting Potential

The electrical potential of a neuron or muscle cell when it is not active.

**Example:** The resting potential of a neuron is typically around -70 millivolts.

## Resting Potential

The inside of the neuron is negatively charged as compared to the outside of the neuron.



# Synapse

The junction between two nerve cells, where electrical or chemical signals are transmitted.

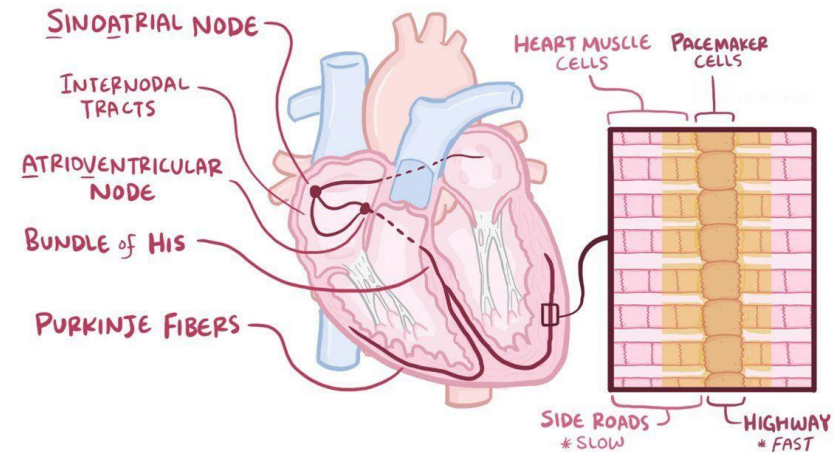
**Example:** Neurotransmitters are released at the synapse to transmit signals between neurons.



# Pacemaker Cells

Specialized heart cells that generate electrical impulses, controlling the heart rate.

**Example:** The pacemaker cells in the sinoatrial node initiate the heartbeat.



# Electrophysiology

The study of the electrical properties of biological cells and tissues.

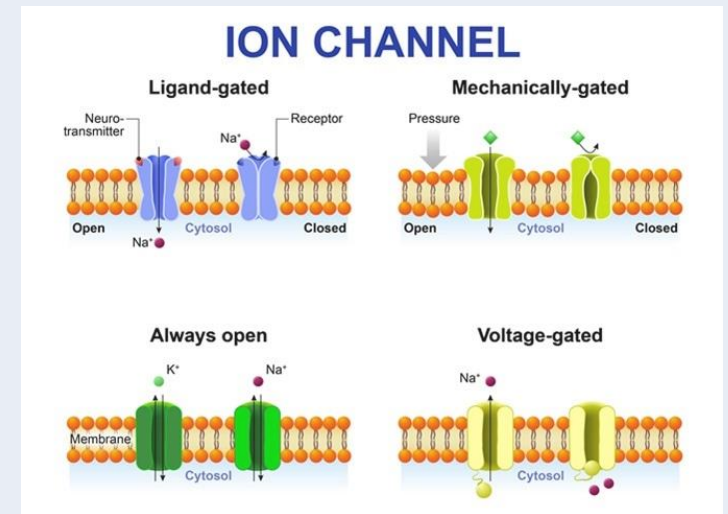
**Example:** Electrophysiology is used to diagnose and treat heart rhythm disorders.



# Text 1: The Role of Ion Channels in Neurons

In the field of bioelectricity, ion channels play a crucial role in the functioning of neurons. These specialized proteins form pores in the cell membrane, allowing specific ions to pass through.

The movement of ions, such as sodium and potassium, generates the membrane potential that is essential for the transmission of electrical signals.



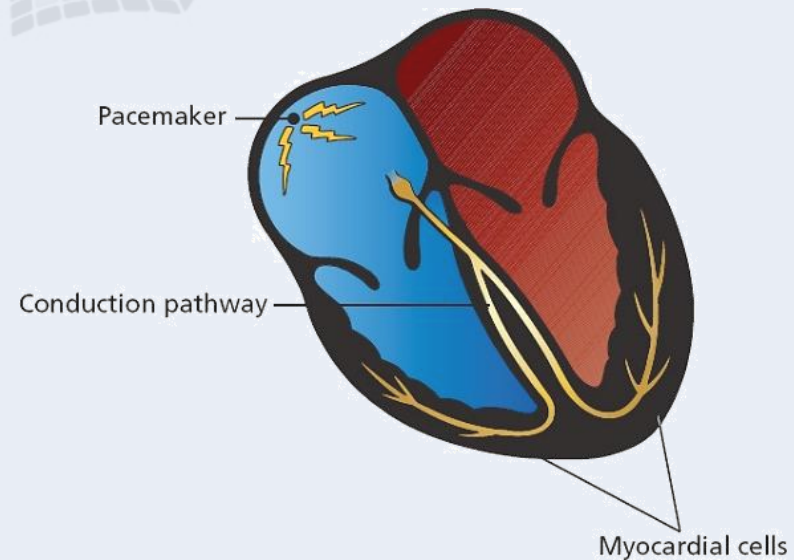
## Text 1: The Role of Ion Channels in Neurons

When a neuron is stimulated, these ion channels open, leading to depolarization, where the inside of the cell becomes less negative compared to the outside. This change in electrical charge propagates along the neuron as an action potential, enabling communication within the nervous system.

## Text 2: Understanding the Pacemaker Cells

**Pacemaker cells** are a group of specialized cells located in the heart that generate **electrical impulses** to regulate the heart's rhythm.

These cells are primarily found in the **sinoatrial node**, which is often referred to as the natural pacemaker of the heart.

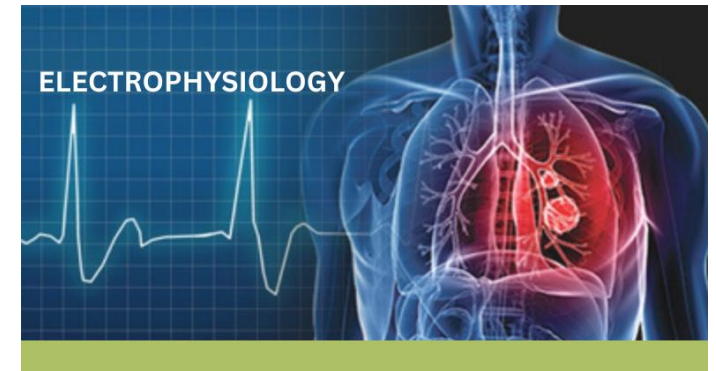


## Text 2: Understanding the Pacemaker Cells

The electrical activity produced by these cells triggers the **contraction** of the heart muscles, ensuring a steady heartbeat. If the sinoatrial node fails, other parts of the heart can take over, but they are usually less efficient. Understanding the behavior of pacemaker cells is crucial in treating conditions like **arrhythmias**, where the heart's rhythm becomes irregular.

## Text 3: The Importance of Electrophysiology in Medicine

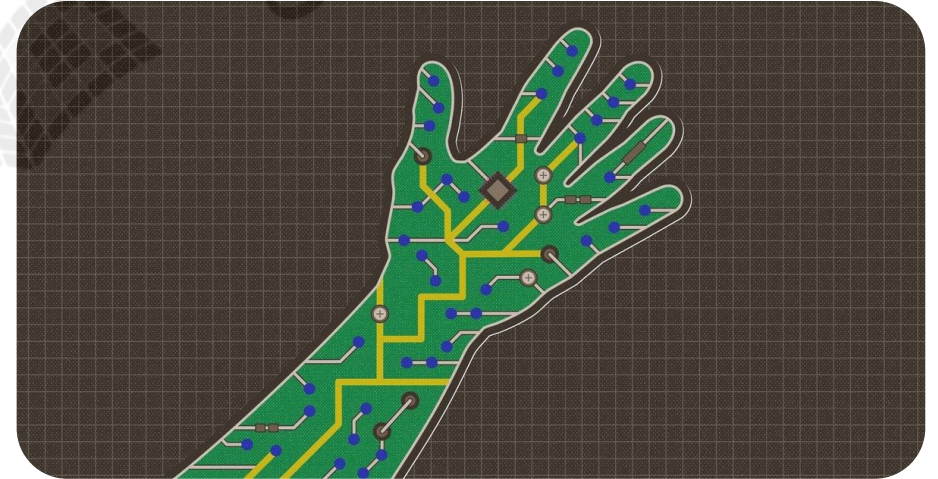
**Electrophysiology** is a branch of medicine that studies the **electrical properties** of biological tissues, particularly in the heart and brain. This field is essential for understanding how electrical signals control physiological processes, such as heartbeats and brain activity. In clinical settings, electrophysiology is used to diagnose and treat conditions like **epilepsy** and heart **arrhythmias**.



## Text 3: The Importance of Electrophysiology in Medicine

For example, an **electroencephalogram (EEG)** is a common electrophysiological test that measures the electrical activity of the brain. Similarly, an **electrocardiogram (ECG)** is used to assess the electrical function of the heart. Advances in electrophysiology have significantly improved our ability to manage various disorders related to the heart and nervous system.

**Scenario:** You are a graduate student in bioengineering, tasked with writing a short essay on the topic: **"The Role of Bioelectricity in Modern Medicine."** Your essay should discuss how bioelectricity is used in diagnosing and treating diseases, and highlight its potential future applications.



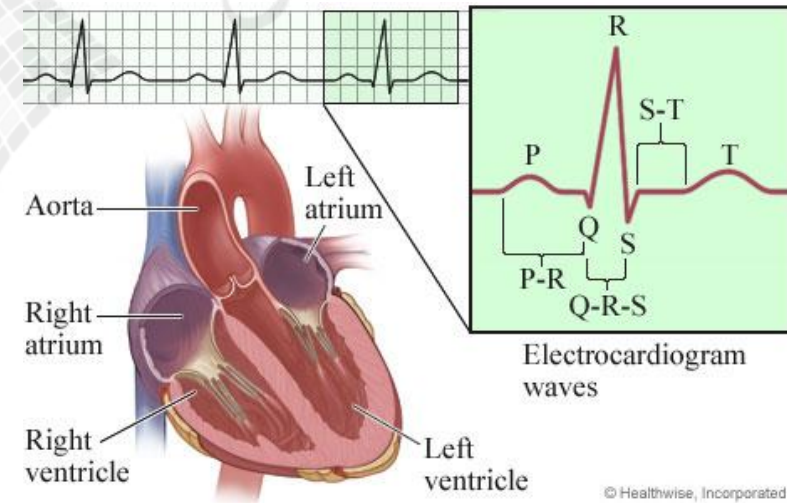
## Sample Answer

Bioelectricity, the study of electrical phenomena in biological systems, has become an integral part of modern medicine. It plays a crucial role in both the diagnosis and treatment of various diseases, particularly those related to the heart and nervous system. One of the most well-known applications of bioelectricity is the use of electrocardiograms (ECGs) to monitor heart activity.



# Sample Answer

ECGs measure the electrical impulses generated by the heart, providing valuable information about heart health and helping to diagnose conditions such as arrhythmias and myocardial infarctions.



## Sample Answer

In addition to diagnostics, bioelectricity is also utilized in therapeutic procedures. For example, pacemakers are bioelectrical devices implanted in patients with irregular heartbeats. These devices regulate the heart's rhythm by delivering electrical impulses directly to the heart muscle, ensuring a steady heartbeat. Another significant application is deep brain stimulation (DBS), a technique used to treat neurological disorders like Parkinson's disease.

DBS involves implanting electrodes in specific brain regions to modulate abnormal electrical activity, thereby alleviating symptoms.



## Sample Answer

Looking to the future, bioelectricity holds great promise for advancing medical treatments. Researchers are exploring the potential of bioelectrical signals to promote tissue regeneration and wound healing. Additionally, the development of bioelectric implants that can interact with the nervous system to restore lost functions, such as vision or movement, is an exciting area of ongoing research. As our understanding of bioelectricity continues to grow, so too will its applications in medicine, offering new hope for patients with previously untreatable conditions.



# Analysis

## Introduction

**Sentence:** "Bioelectricity, the study of electrical phenomena in biological systems, has become an integral part of modern medicine."

## New Words:

**Bioelectricity:** The study of electrical processes in biological systems.

**Phenomena:** Observable events or occurrences.

# Analysis

**Structure:** Begins with a broad definition of bioelectricity, followed by its importance in modern medicine.

**Grammar:** Uses present perfect ("has become") to indicate ongoing relevance.

# Analysis

## Body Paragraph 1:

**Sentence:** "One of the most well-known applications of bioelectricity is the use of electrocardiograms (ECGs) to monitor heart activity."

## New Words:

**Electrocardiogram (ECG):** A test that records the electrical activity of the heart.

**Arrhythmias:** Irregular heartbeats.

# Analysis

**Structure:** Introduces a specific application of bioelectricity (ECGs) and its importance in diagnosis.

**Grammar:** Uses present simple ("is") to state a general fact.

# Analysis

## Body Paragraph 2:

**Sentence:** "In addition to diagnostics, bioelectricity is also utilized in therapeutic procedures."

## New Words:

**Pacemakers:** Devices that regulate the heart's rhythm using electrical impulses.

**Deep Brain Stimulation (DBS):** A treatment involving electrical stimulation of specific brain regions.

# Analysis

**Structure:** Transition from diagnostics to therapeutic applications, maintaining a logical flow.

**Grammar:** Uses passive voice ("is utilized") to emphasize the action over the subject.

**Conclusion:**

**Sentence:** "Looking to the future, bioelectricity holds great promise for advancing medical treatments."

**New Words:**

**Regeneration:** The process of renewal, restoration, or growth.

**Implants:** Devices placed inside the body for medical purposes.

# Analysis

**Structure:** Concludes by discussing future potential, offering a forward-looking perspective.

**Grammar:** Uses future simple ("will") to indicate potential developments.

# Listening



## Speaking

**Scenario:** You are a graduate student specializing in Bioelectrical Engineering, and you run into a colleague in the lab who is also in the field but focusing on a different aspect. You both begin discussing your current research projects, recent advancements in the field, and potential collaborations. The conversation should touch on various topics related to bioelectrical engineering, such as neural interfaces, medical devices, and future trends.



# Conversation

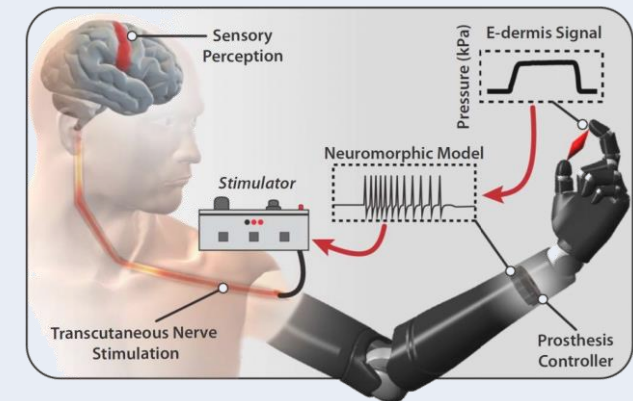
- **You:** Hey [Colleague's Name], good to see you! How's your research on neural interfaces going?
- **Colleague:** Hi! It's going well, thanks. We're making some progress in developing more precise neural interfaces for prosthetic control.

The goal is to improve the accuracy of signal interpretation

so that the prosthetics can perform more complex tasks.

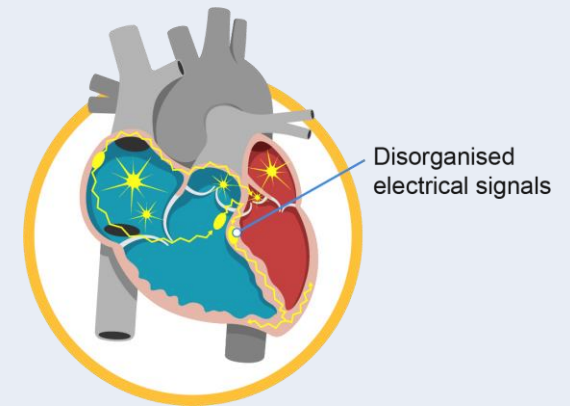
What about you?

What's your latest project in bioelectrical engineering?



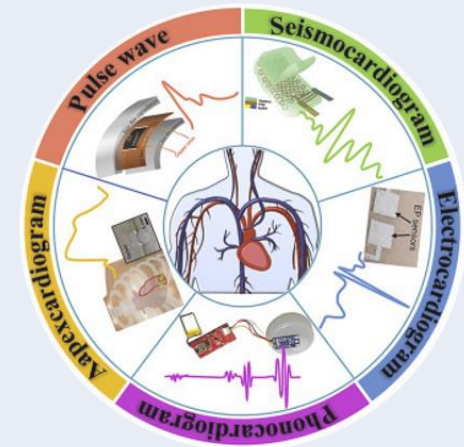
# Conversation

- **You:** That sounds fascinating! I'm currently working on developing bioelectrical sensors for early detection of cardiac arrhythmias. We're trying to create a wearable device that can continuously monitor heart signals and alert users before any serious issues arise.
- **Colleague:** That's a great application!
- Early detection could really save lives.
- What kind of challenges are you facing with that?



# Conversation

- **You:** One of the main challenges is ensuring the sensors are both sensitive and specific enough to detect subtle changes in heart rhythms without generating too many false alarms. We're also working on minimizing the power consumption of the device to extend battery life.
- **Colleague:** Power efficiency is always a tough one. We've been facing similar issues with our neural interfaces, especially since they need to process a lot of data in real-time. Have you looked into low-power microcontrollers or any energy-harvesting techniques?

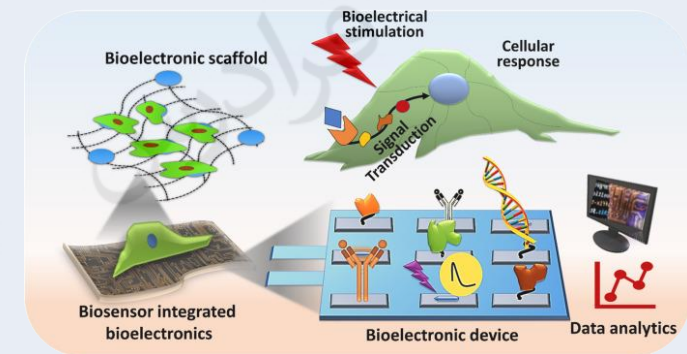


# Conversation

- **You:** Yes, we're exploring a few different approaches, including using energy-efficient microcontrollers and integrating small solar panels for energy harvesting. It's still in the experimental stage, though.

Speaking of advancements, have you heard about the recent developments in bioelectric scaffolds for tissue regeneration?

- **Colleague:** I have! It's amazing how they're using bioelectrical signals to promote cell growth and tissue repair. I'm curious to see how this technology might be integrated with neural interfaces in the future, especially for neural tissue regeneration.



## Conversation

- **You:** Absolutely, the possibilities are endless. I think there's a lot of potential for collaboration between our projects. Maybe we could work on something that combines our expertise in neural interfaces and bioelectrical sensing.
- **Colleague:** That's a great idea! Let's set up a meeting next week to brainstorm some potential projects. I'm sure we could come up with something innovative.
- **You:** Definitely, I'll send you a calendar invite. Looking forward to it!